



jordan fishwick

New Street New Mills High Peak



New Street New Mills High Peak SK22 4PD

£240,000




The Property

Beautifully presented throughout, a lovely traditional stone built, garden fronted terraced house. Situated in a desirable residential location and offering good sized accommodation. Private enclosed rear garden and updated to a high standard. Briefly comprising: Entrance hall, living room with oak flooring, recently fitted dining kitchen with integrated appliances and understairs storage cupboard, utility room leading into rear garden, to the first floor there are two double bedrooms and a recently fitted modern shower room. The low maintenance rear garden enjoys open views and is enclosed. Convenient for New Mills train stations and amenities, New Street is a must see!



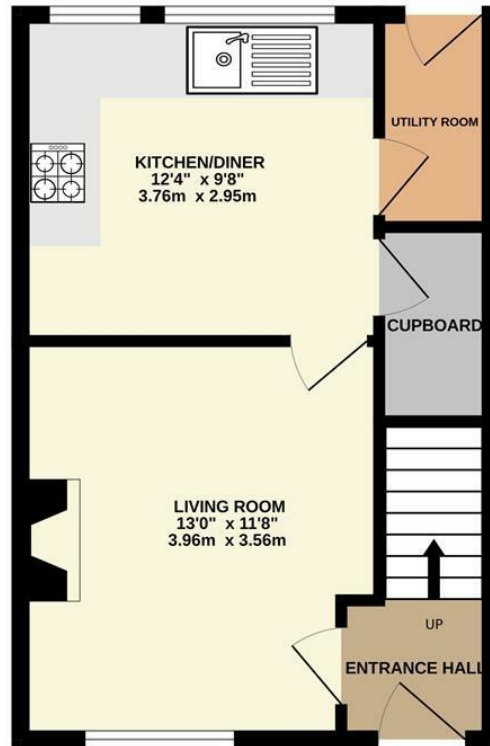
- Beautifully Presented Garden Fronted Mid Terrace
- Two Double Bedrooms
- Recently Fitted Modern Dining Kitchen with Integrated Appliances
- Lovely Enclosed Low Maintenance Rear Garden
- Stunning Open Views To Rear
- Recently Fitted Modern Shower Room
- Popular Convenient Location
- Useful Utility Room

Postcode SK22 4PD
 EPC Rating
 Local Authority High Peak
 Council Tax B

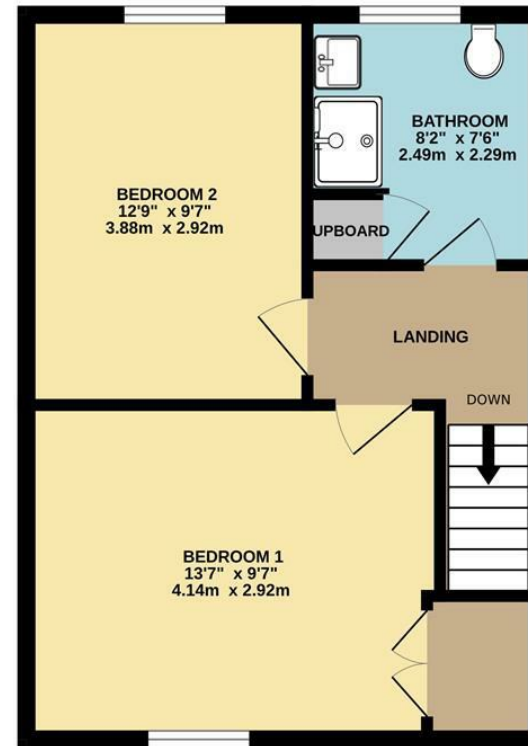
Energy Efficiency Rating		
	Current	Potential
Very energy efficient - lower running costs		
(92 plus) A		
(81-91) B		
(69-80) C		
(55-68) D		
(39-54) E		
(21-38) F		
(1-20) G		
Not energy efficient - higher running costs		
England & Wales	EU Directive 2002/91/EC 	



GROUND FLOOR
355 sq.ft. (33.0 sq.m.) approx.



1ST FLOOR
393 sq.ft. (36.5 sq.m.) approx.



TOTAL FLOOR AREA : 749 sq.ft. (69.6 sq.m.) approx.

Whilst every attempt has been made to ensure the accuracy of the floorplan contained here, measurements of doors, windows, rooms and any other items are approximate and no responsibility is taken for any error, omission or mis-statement. This plan is for illustrative purposes only and should be used as such by any prospective purchaser. The services, systems and appliances shown have not been tested and no guarantee as to their operability or efficiency can be given.
Made with Metropix ©2026



These particulars are believed to be accurate but they are not guaranteed and do not form a contract. Neither Jordan Fishwick nor the vendor or lessor accept any responsibility in respect of these particulars, which are not intended to be statements or representations of fact and any intending purchaser or lessee must satisfy himself by inspection or otherwise as to the correctness of each of the statements contained in these particulars. Any floorplans on this brochure are for illustrative purposes only and are not necessarily to scale.

Offices at: Chorlton, Didsbury, Disley, Hale, Glossop, Macclesfield, Manchester Deansgate, Manchester Whitworth Street, New Mills, Sale, Wilmslow and Withington

14 Market St, Disley, Cheshire, Stockport SK12 2AA

01663 767878

disley@jordanfishwick.co.uk
www.jordanfishwick.co.uk